



Austrics 24.2

Release Notes

May 2024

TABLE OF CONTENTS

Introduction	3
New Features	3
Trip Editor Statistics Dashboard	3
CSV Timetable Import.....	4
Expected CSV Data Format	4
Steps to Import a CSV Timetable	5
Updates & Improvements.....	6
Dataset Manager	6
PLAN	6
FLEET	6
CREW	7
ROSTER.....	8
Interfaces.....	8
System.....	8
Online Release Notes	9

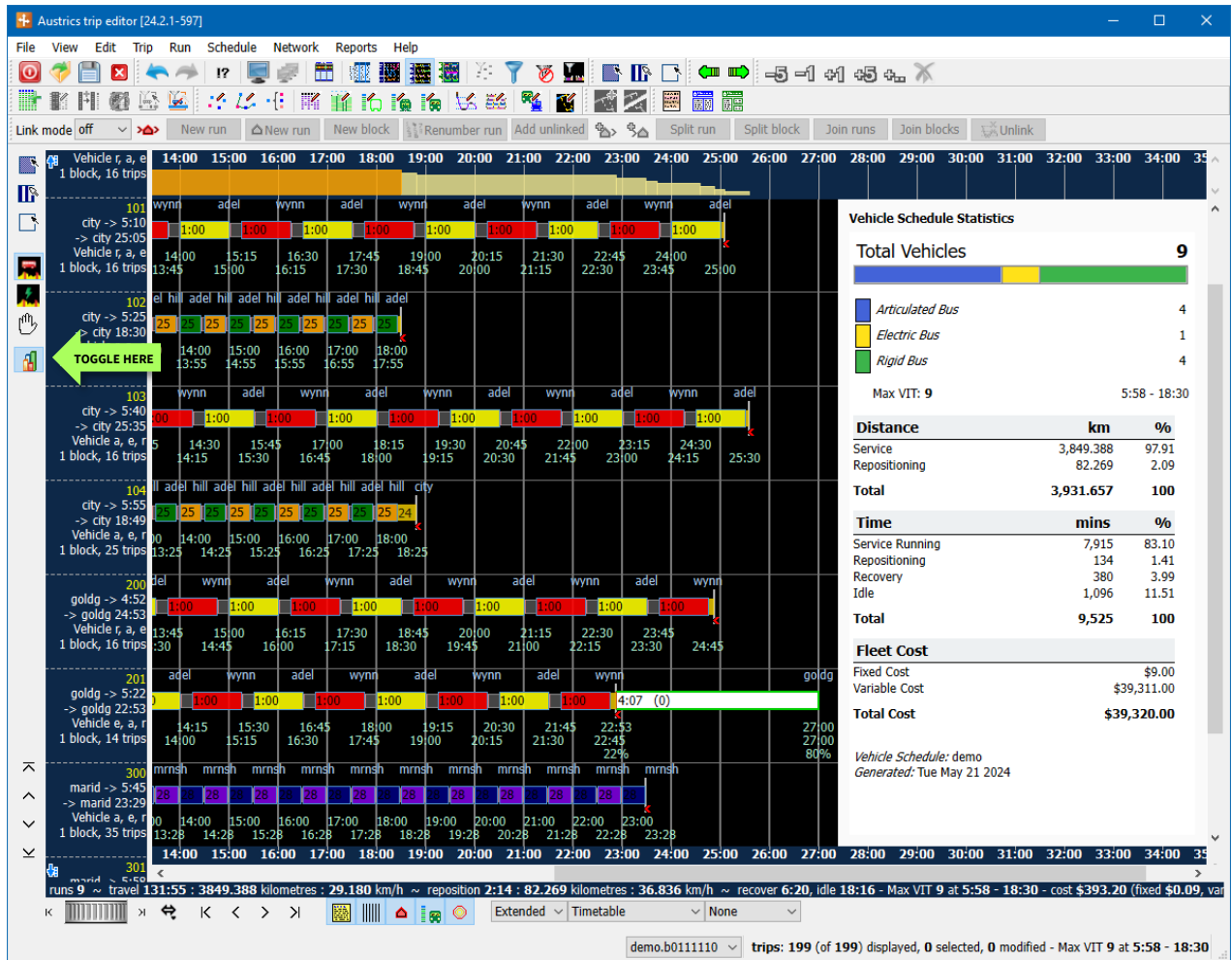
INTRODUCTION

Austrics 24.2 introduced several improvements to both the user experience and additional scheduling functionality. This includes the Trip Editor Statistic Dashboard and a new CSV Timetable Import.

NEW FEATURES

Trip Editor Statistics Dashboard

While working in the Trip Editor there is now the ability to toggle the display of a live dashboard. This allows the scheduler to visually see the changes to dead and service costs as operational adjustments are being applied.



The statistics dashboard is available in the Zig-Zag, Horizontal Run, and Horizontal Schedules views.

CSV Timetable Import

The timetable import process has also been streamlined in the 24.2 release. Please find the steps to import a new CSV timetable below.

Expected CSV Data Format

The Timetable Import requires that all timetable data is in the format outlined below, saved in Comma Delimited Format (.csv), available in software such as Microsoft Excel or Google Sheets.

A separate file is required for each different route (or logical group of routes) and day type. In addition, each file should follow a specific naming format.

Examples: i275w o275w i275t o275t i275s o275s

Where...

- **i** or **o** indicates a direction of travel (inbound or outbound)
- **275** indicates the route number (or represents a group of route numbers)
- **w, t, s** indicate the day type on which the timetable operates (Weekdays/Saturdays/Sundays)

Below is a sample of the contents in the timetable file **i275w.csv**:

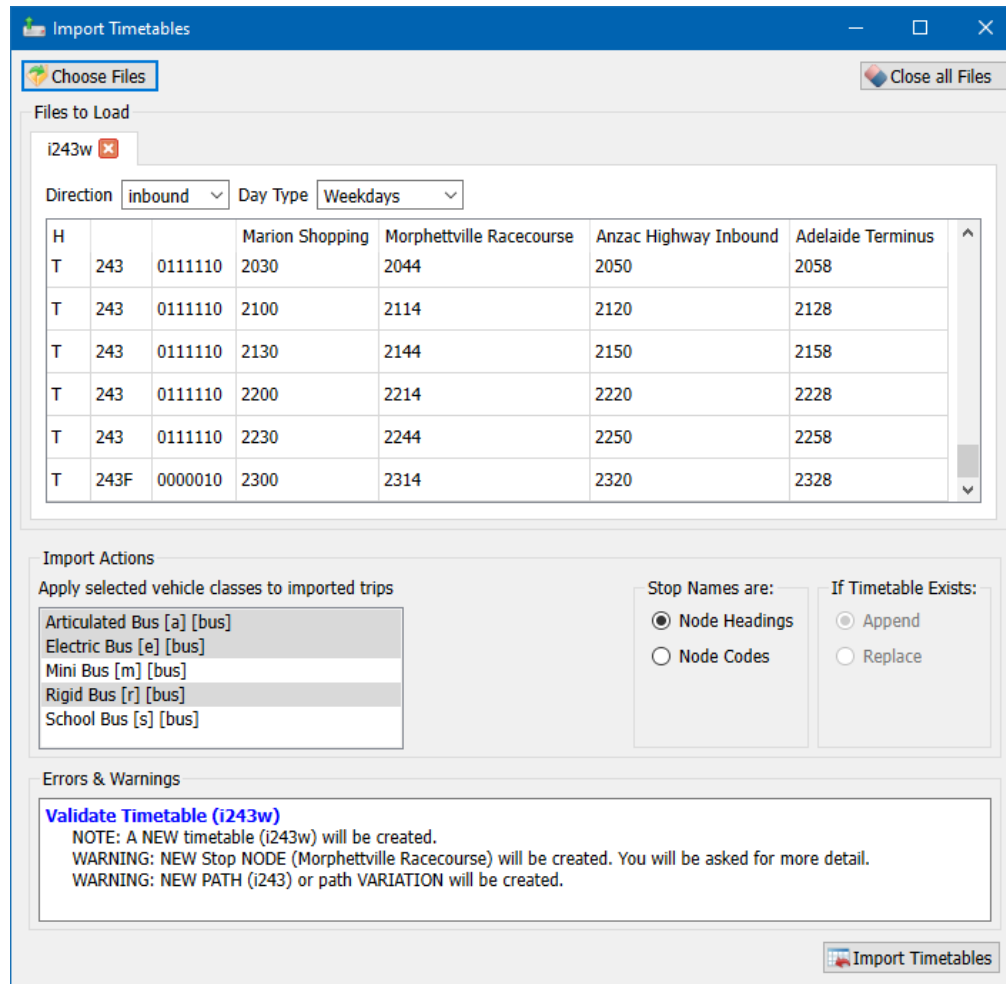
	ROUTE	DAY FLAGS (optional)	STOP HEADINGS					
HEADER ROW	H		Glenelg	West Beach	Plympton	Richmond	City	
TRIP DETAIL ROWS	T	278	730	740		820	835	
	T	275	750		825	840	855	
	T	278	810	820		900	915	
	T	278X	820				900	
	T	275	830		905	920	935	
	T	278	850	900		940	955	
	T	276			910		950	1005
	T	278		910	920		1000	1015
	T	275		930		1005	1020	1035
	T	278		950	1000		1040	1055
	T	278	0000010	1010	1020		1100	1115
	T	276	0111100		1020		1100	1115
	T	275		1030		1105	1120	1135

TIMES
(24 hr, no separator)

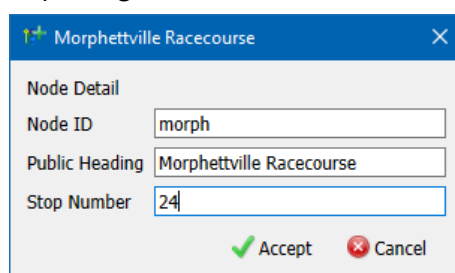
For the full specification please send a request to: support@trapezegrp.com.au

Steps to Import a CSV Timetable

1. Open the **Trip Editor**.
2. Go to the **Trip** menu and select **Import Timetables**.
3. Browse to and select one or more CSV timetables to be imported.
4. The editor will display each loaded timetable file, allowing the user to check over the data to be imported.
5. Additional import options can also be adjusted, such as the *Direction*, *Day Type*, *Vehicle Classes*, *Stop Name* format, and whether the import should *replace* or *append* an existing timetable.



6. When ready to proceed with the import, click **Import Timetables** in the bottom right corner.
7. If a stop doesn't exist, the user can enter the *Node ID* and *Public heading* to create it along with the import process or cancel the process and go to the Network Planner and create the stop prior to importing.



UPDATES & IMPROVEMENTS

Several updates and improvements to existing functionality are also included in this release. These items have been separated into the relevant Austrics modules below.

Dataset Manager

AM-6389	Copying repositioning file type will now automatically copy associated zpath files.
AM-7122	Searching files in Dataset contents will now find any files that match the text entered.
AM-7825	Added <i>Austrics Release Notes</i> link to the Help menu.
AM-7985	The Austrics Windows Client will now automatically notify of updates available to install.
AM-7988	Default files selection accessed from the Schedule Data Creation screen now loads okay.

PLAN

AM-6839, AM-7892	Clicking data column headers in the Network Planner now use smart sorting for Data IDs and ensure numerical values are sorted appropriately according to their values.
AM-8015	(Windows) Network Planner – Fixed an issue where the <i>Remove a Road</i> option would not be available for certain users in the Map Data > Road Base panel.

FLEET

AM-7056	Timetable Statistics report will now generate both text and CSV output at the same time.
AM-7639	Fixed an issue where the Undo/Redo system would not behave as expected with certain Trip Editor standalone file editors.
AM-7853	Fixed Vehicles in Traffic report so the user can properly filter Vehicle Schedules based on Day Flags.
AM-7891, AM-7957	Trip Editor – Trip label display settings for Zig-Zag view will now be correctly saved when reloading sessions with the Session Manager.
AM-7897	Trip Editor – Fixed an issue where charging errors would occur if no default file was specified for the chargertype and chrates files.
AM-7899	Trip Editor – Fixed an issue where the Horizontal Schedule view may display unlinked trips even through no Driver Schedules were open at the time.
AM-7908	As the chargertype and chrates default files work together with the same file name, setting one will now always ensure the other is also set to keep the files in sync.
AM-7956	Trip Editor – Fixed an issue where newly created running time timepoint files would remain locked for update after an undo operation.
AM-7989	Trip Editor – Fixed an issue where if certain specific configurations were set, the Trip Editor would fail to open the node file for update on startup.

AM-8004	(Windows Client) Optimiser Job Manager – Fleet Job setup will now only display Vehicle Schedule Versions without a dash number (i.e. not created from a Crew Job).
AM-8005	The new constraints file editor will now automatically add a new keyword row when a new constraint record is created.
AM-8166	Trip Editor – Fixed an issue where some Global Stop IDs would be flagged as invalid but were in fact valid Global Stop IDs.
AM-8173	Trip Editor – Fixed an issue where the Max VIT time range statistic was not correctly displayed in the Horizontal Run view.
AM-8190	Variable Days – Fixed an issue that prevented the user from changing certain data files if a linking result was already obtained for the specified vehicle schedule version.

CREW

AM-6449, AM-6450	Improvements made to Copy Schedule Book when run from the Dataset Manager.
AM-6500, AM-6609	Fixed an issue where attempting an optimisation job using over 60 unique Run Groups would fail to create certain expected shifts based on Run Group constraints.
AM-7830	Fixed an issue where having a large number of depots (i.e. over 93) defined in the Relief Point file could occasionally cause a crash in the optimisation job process.
AM-7838	(Windows Client) Optimiser Job Manager – Create Schedule Data will now only display Vehicle Schedule Versions without a dash number (i.e. not created from a Crew Job).
AM-7883	Crew job monitoring window no longer becomes unresponsive if following excessively large output files.
AM-7887, AM-8159	(Windows Client) Optimisation Job Manager will no longer provide a warning if a blank constraints file is used.
AM-7948	(Windows Client) Optimiser Job Manager – Improved error messages to better show if any hard constraints were not able to be met.
AM-7987	Fixed an issue with the Trip Block Roster output not correctly displaying trips that involved a driver changeover.
AM-7992	Fixed an issue where the Staff Car Graph Segment Report would occasionally display overlapping text.
AM-8011	(Windows Client) Optimiser Job Manager – Fixed an issue in the Crew Job schedule data selection where newly generated data would not always appear in the list.
AM-8018	(Windows Client) Optimiser Job Manager – Constraints statistics table now correctly displaying spaces in the <i>matching</i> column.
AM-8138	(Windows Client) Optimiser Job Manager – Fixed an issue that would prevent the user from creating a new GLOBAL or TOLERANCE mataward files from Crew Job Setup.

AM-8139	(Windows Client) Optimiser Job Manager – Added the ability to recreate Schedule Data for a Crew job if Rerun Job is used and the original Schedule Data cannot be found.
AM-8162, AM-8007	(Windows Client) Optimiser Job Manager – Crew Job Setup improvements to assist with and better explain recommended usage for <i>Cut Type</i> and <i>Auto Reruns</i> settings.

ROSTER

AM-7827, AM-8134	Improved validation and error messaging for instances where adjacent roster duties were in violation of the <i>Maximum work in a 24 hr period</i> rule as defined in options.
AM-8140	Roster Planner will now allow the user to delete multiple roster files at the same time from the File Open dialog.
AM-8165	Roster Planner will now save any user configured order of columns in Shift Selection.

Interfaces

AM-7864	The TIMS Export will now include Trip Notes as part of the TIMS Extract output. Supported by TIMS version 24.2 or later, contact your TIMS consultant for more details.
AM-7924	(Windows Client) Improvements made to increase the reliability of the TODIS Export transfer process to Transport for NSW servers.
AM-8203	TODIS Export for non-NSW locations will now continue to generate output even if errors are encountered.

System

AM-7847	Added a check to the Austrics Windows Client to inform the user if their workstation's CPU hardware is unsupported/out of date.
AM-7863	Fixed an issue where leaving the Austrics Windows Client inactive for an extended period of time could cause some files to appear with an incorrect lock status.
AM-7959	Improvements made to the Dataset Server to avoid a lockup occurring that would (on rare occasions) prevent a user from logging into the Dataset Manager.

ONLINE RELEASE NOTES

Online copies of all release notes are available at:

<https://releasenotes.trapezgroup.com.au/austrics/>

For further information on any of the items in these notes, or if you have any questions or concerns regarding the Austrics software, please do not hesitate in sending an email to:

support@trapezgroup.com.au